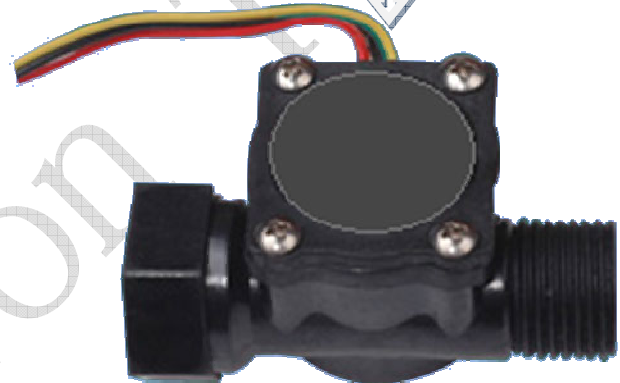


MH 187 or MH189 use on Flowmeter, Rotation Detector



Recommend protection circuit on Reverse bias of power supply pin

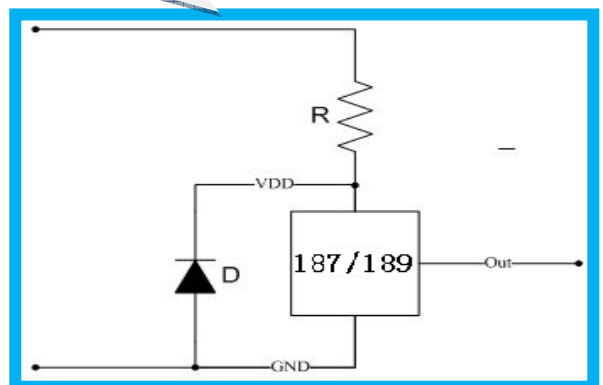
Features

MH 187 (General-Purpose Hall Effect Latch)

- Temperature compensation.
- Optimized for BLDC motor applications.
- Wide operating voltage range.
- **Open-Collector pre-driver.**
- Typ 30 Gauss
- 100% tested at 125 °C for K

MH 189 (Ultra High Sensitivity Hall Effect Sensor)

- Chopper stabilized amplifier stage
- Optimized for BLDC motor applications
- New miniature package / thin, high reliability package
- 100% tested at 125 °C for K
- **a short circuit protected Pull-up resistor output**
- Ultra High Sensitivity. Typ 15 Gauss.



Cost competitive/Quality competitive/Service Competitive/Supporting Competitive

MH187 pin to pin to US1881/US2881/A 3282/A 3280

MH189 pin to pin EW512/EW732